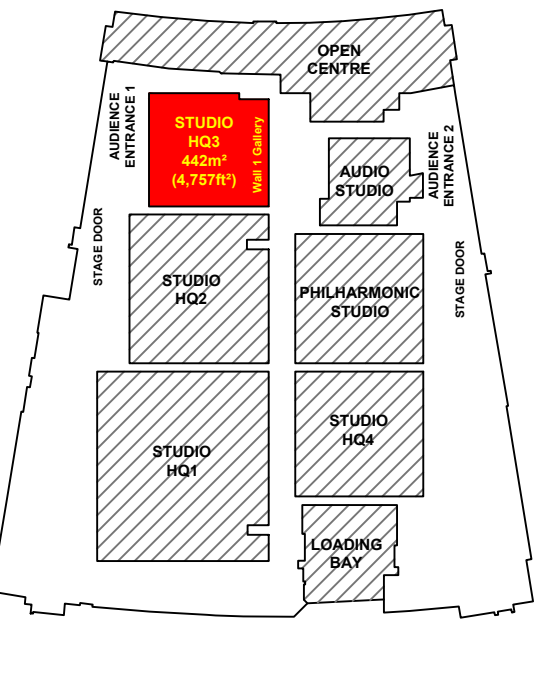


MEDIA CITY

HQ3 Studio Plan

Lighting Circuit Layout

STUDIO HQ3 LOCATION PLAN



Measurements

- STUDIO FLOOR GRID MADE UP OF 600mm SQUARES
- STUDIO WALL 2 TO WALL 4: 23.072m (75.7ft)
- STUDIO WALL 2 TO WALL 4 WITHOUT FIRELANE: 21.01m (68.93ft)
- STUDIO WALL 1 TO WALL 3: 18.298m (60ft)
- STUDIO WALL 1 TO WALL 3 WITHOUT FIRELANE: 16.22m (53.21ft)
- STUDIO SPACE: 422.17sq m (4,577 sq ft)
- STUDIO SPACE WITHOUT FIRELANE: 340.78m (3667.76ft)
- IMPOSED LOAD 12kN per sq m
- HEIGHT TO UNDERSIDE OF GANTRY IS: 7.36m
- HEIGHT TO GANTRY UPPER HANDRAIL IS: 8.44m
- HEIGHT TO UNDERSIDE OF GRID IS: 11.5m
- HEIGHT TO OUTER CYC TRACK IS: 6m
- HEIGHT TO MIDDLE CYC TRACK IS: 6m
- HEIGHT TO INNER CYC TRACK IS: 9m
- MAXIMUM HEIGHT OF SCENERY HOOKS IS: approx 10m
- MAXIMUM HEIGHT OF LIGHTING BARS IS: 10m
- SIZE OF LOAD IN DOOR: 3m Wide, 5.2m High

Hoists

- NUMBER OF LIGHTING HOISTS: 57 AT 2.4m, 4 AT 2m, 4 AT 0.48m
- 12 SCENERY TRACKS WITH 3 HOISTS IN EACH TRACK
- NUMBER OF SCENIC HOISTS WITH SWL 180KG: 36

Mains

- GROUND LEVEL MAINS:

- 2x 125A 3φ
- 12x 32A 1φ (FUSED AT 25A)
- 24x 16A 1φ
- 48x 3Kw SINEWAVE DIMMERS

- GANTRY LEVEL MAINS:

- 2x 63A 3φ
- 8x 32A 1φ (FUSED AT 25A)
- 16x 3Kw SINEWAVE DIMMERS

- LIGHTING HOIST MAINS:

- 65x 32A 1φ (FUSED AT 25A) WITH A 16A 1φ PIGGY BACKED
- 296x 3Kw SINEWAVE DIMMERS

- GRID MAINS:

- 2x 32A 3φ (FUSED AT 25A)
- 4x 3Kw SINEWAVE DIMMERS

SWL

- STUDIO FLOOR 12kN/m²
- GANTRY FLOOR 500kg/m²
- GANTRY HANDRAIL CENTRE POINT 100kg, THIRD POINTS 120kg
- GRID 150kg/m²

KEY:

- Fire Lane
- Water Tap
- Fire Alarm Beacon
- Fire Alarm Sounder
- Facility Panel

3 Phase Mains Outlets

PRODUCTION:

DIRECTOR:

DESIGNER:

DRAWN BY:

PRODUCTION DATE:

Useful Telephone Numbers

- 24hr Control Room 0161 855 6400
- dock10 office 0161 886 5111
- MCR 0161 886 5151

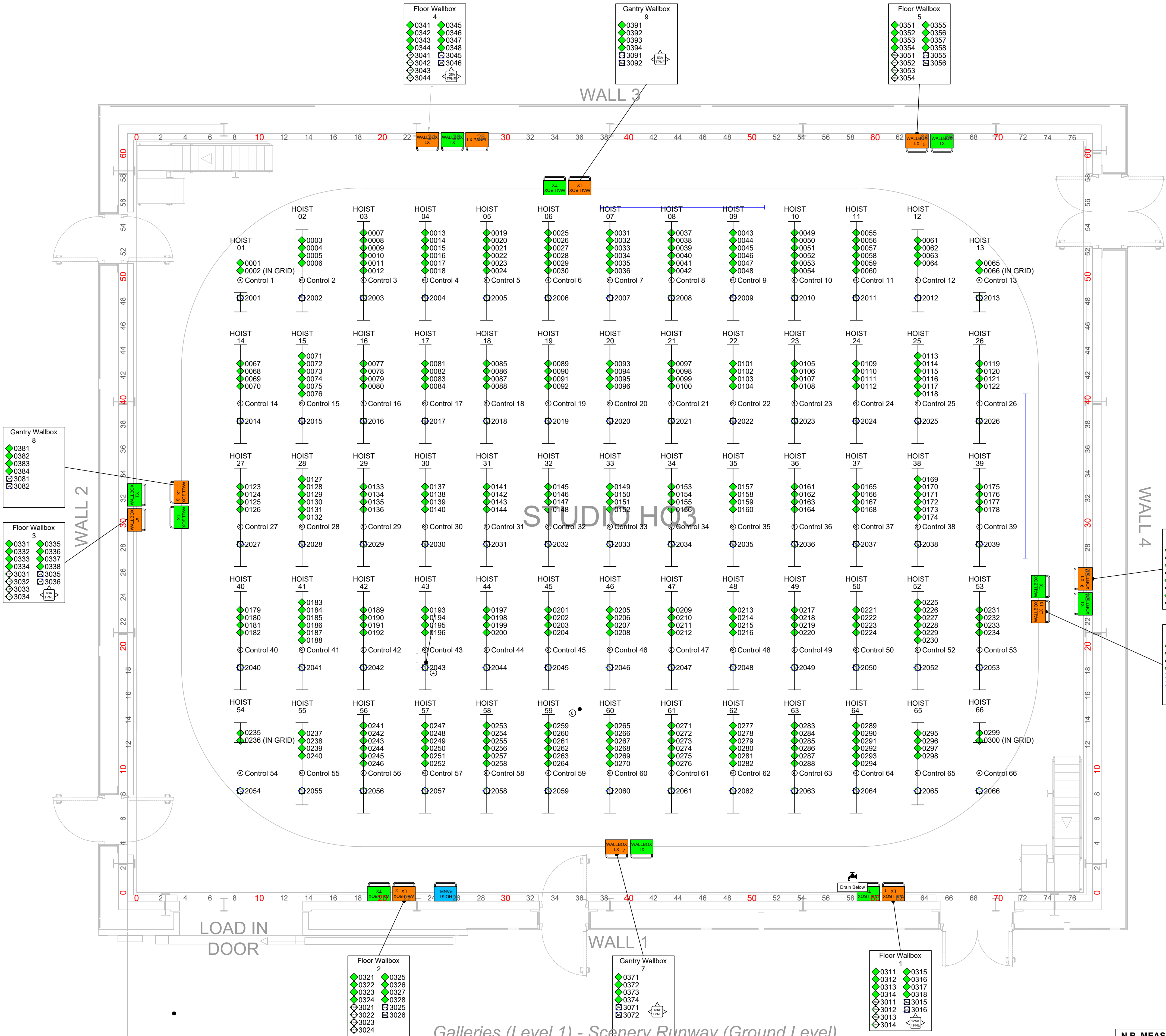
Unauthorised copying or distribution is prohibited

SCALE:

A1 @
ISO_A1_(841.00_X_594.00_MM)

Version: 2
Drafted 10/06/2026,

N.B. MEASUREMENTS ARE INCLUDED AS A GUIDE.
PLEASE DOUBLE CHECK ON SITE IF CRITICAL TO PRODUCTION.
ADEQUATE ARRANGEMENTS FOR ACCESS AND EGRESS TO AND FROM THE STUDIO SHOULD BE ALLOWED IN LINE WITH REGULATIONS



Galleries (Level 1) - Scenery Runway (Ground Level)